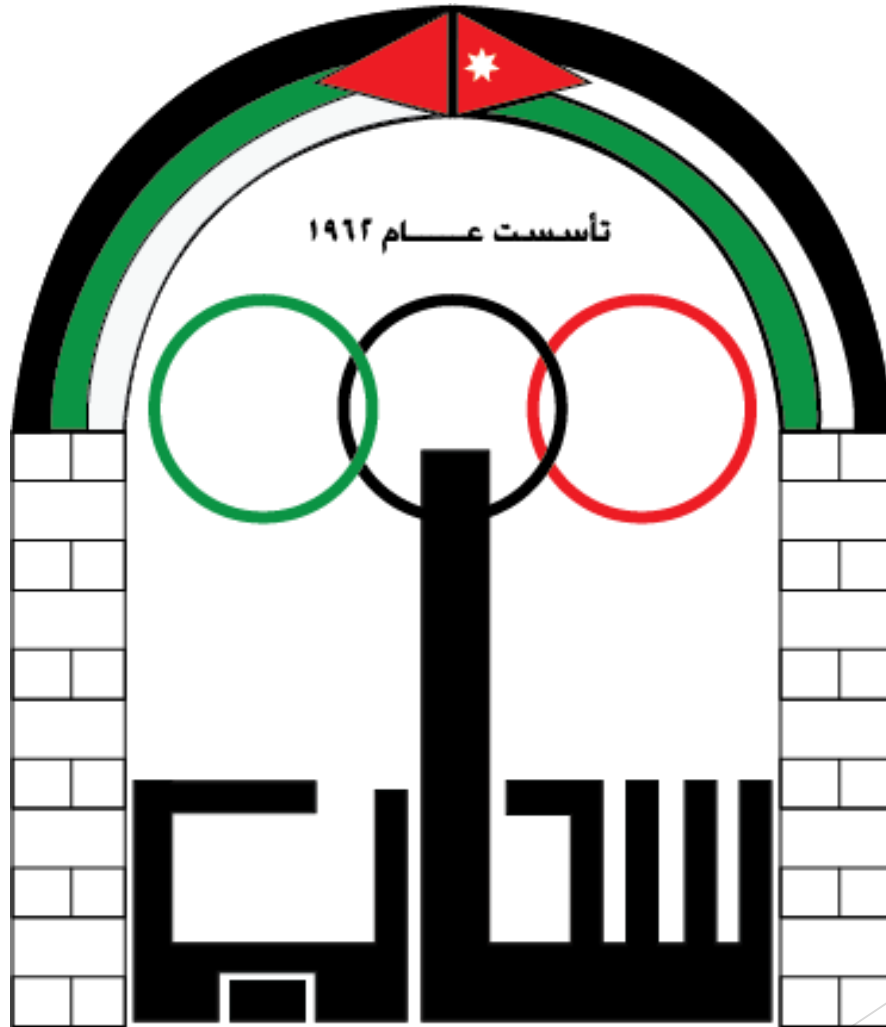


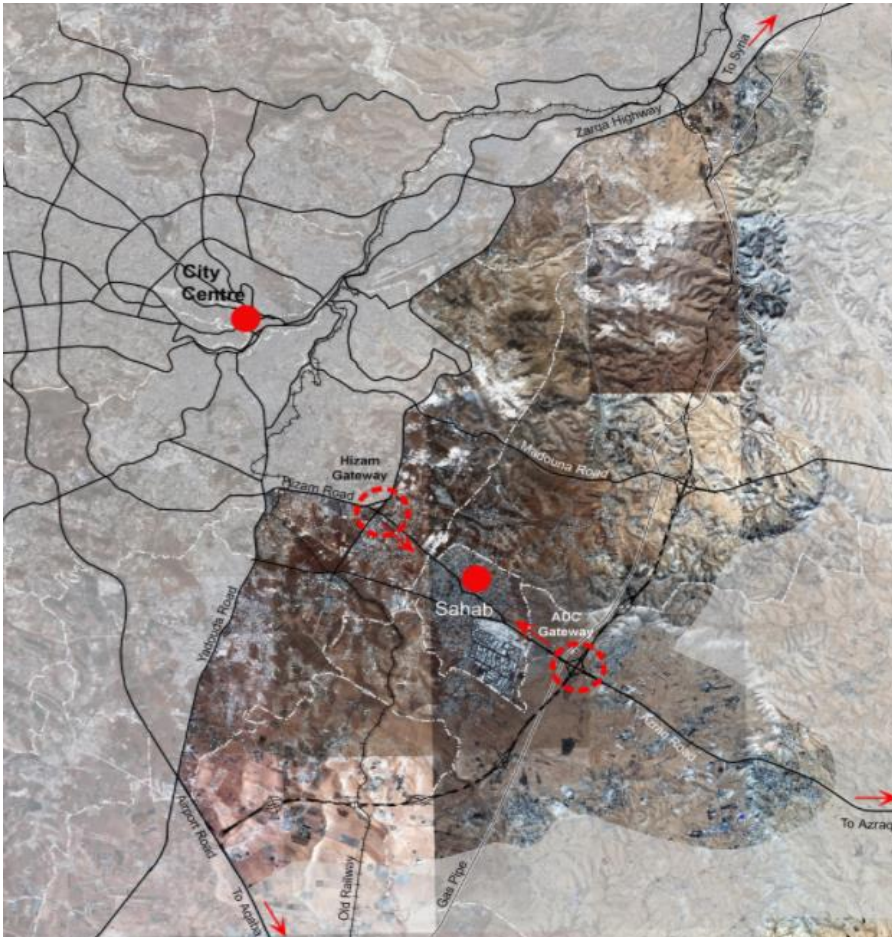
# The MENA Region Initiative as a Model of NEXUS Approach and Renewable Energy Technologies Project (MINARET)



# Sahab Municipality



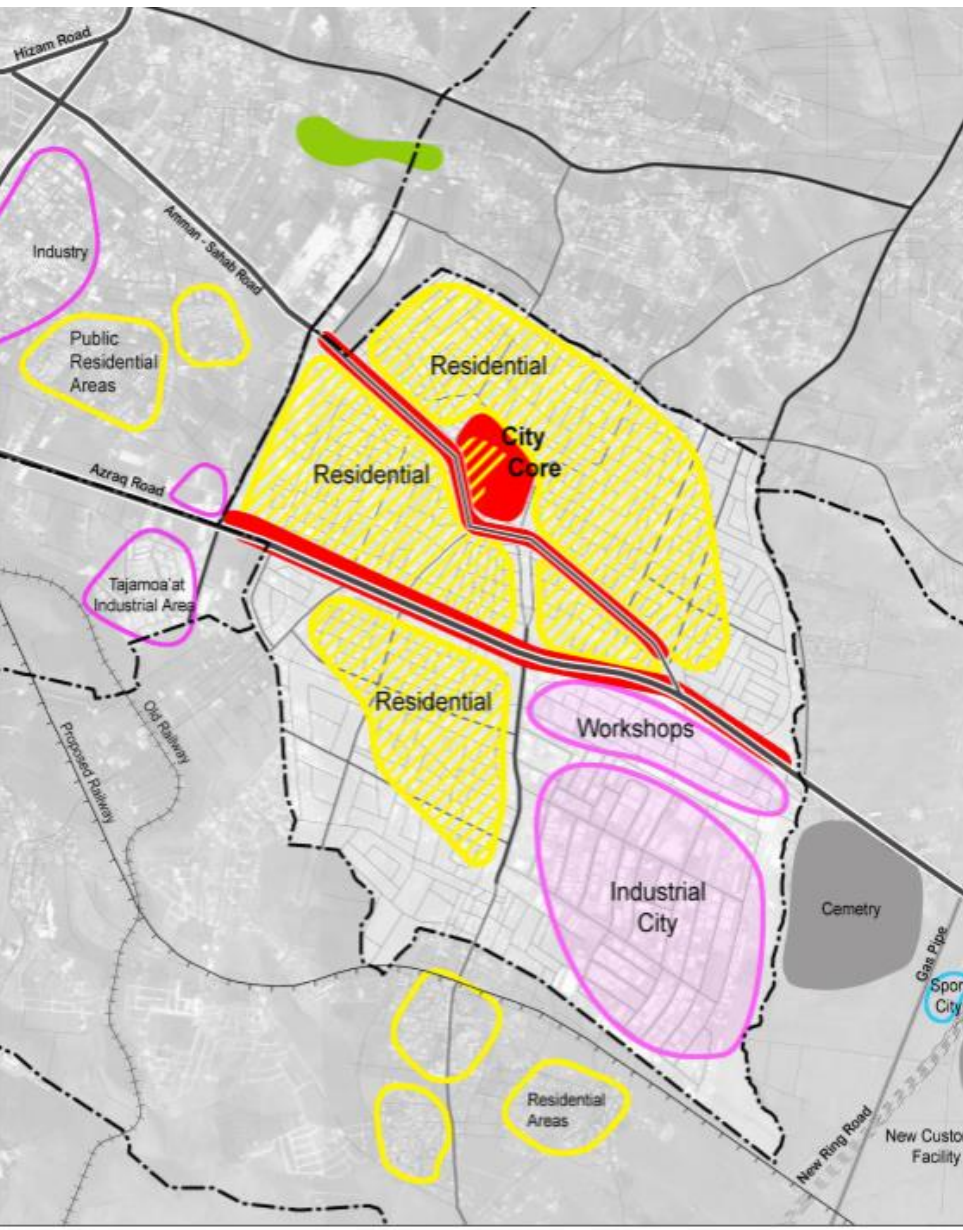
# Introduction



- **Sahab**
  - Total District Area is 1366.6 Ha
  - The population is about 169000



# Existing Structural Pattern



Al Azraq Road



Amman - Sahab Road



Stone Cutting Workshops



Industrial City



Villas



Mixed Use Area



Public Housing



Housing

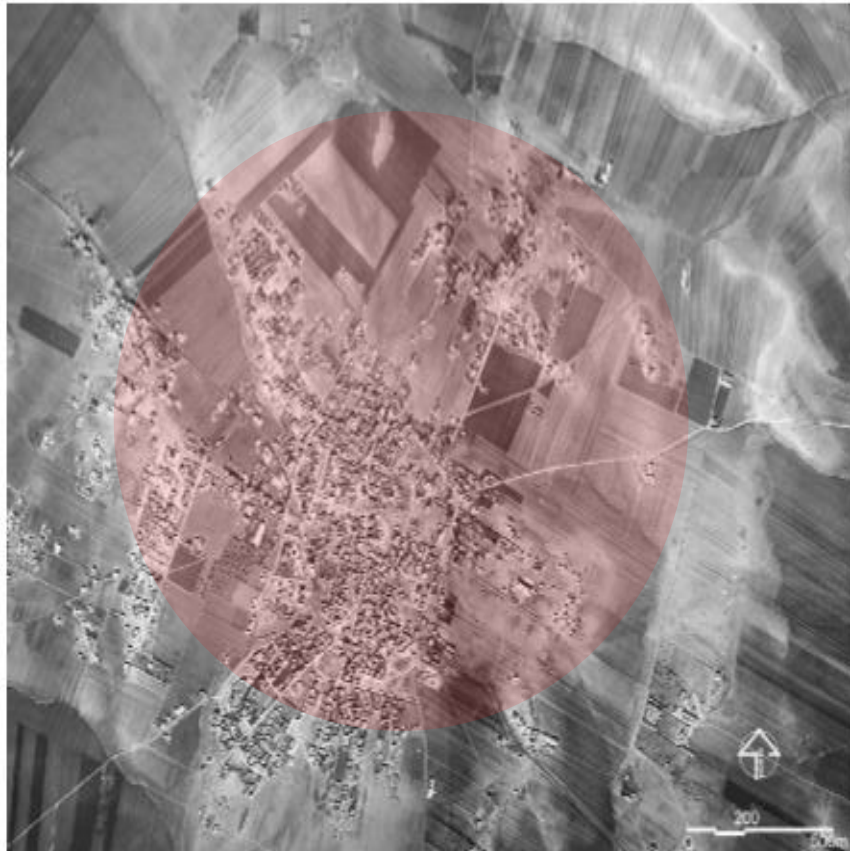
# Sahab - population

- Population 140,000 (Department of Statistics 2016):
  - ✦ 79,000 Jordanians
  - ✦ 40,000 Syrians
  - ✦ 20,000 labor migrants from South-East Asia
  - ✦ 15,000 expatriat workers from Egypt
- Population increase:
  - ✦ In 1994: 20,000
  - ✦ In 2004: 43,909
  - ✦ In 2016: **169,000**

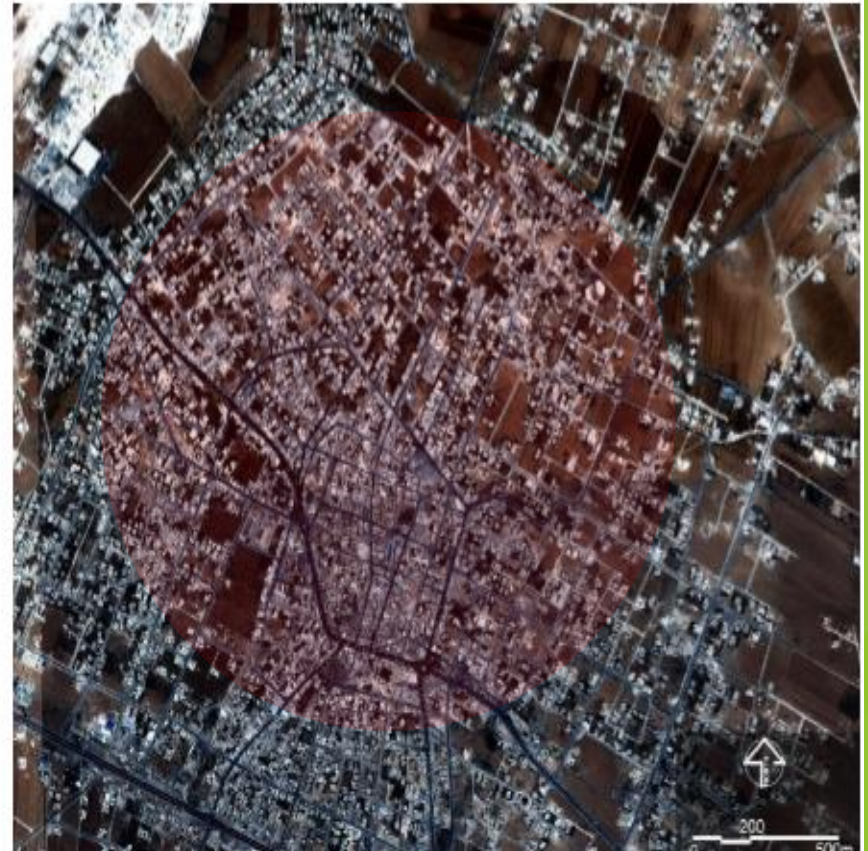


# Sahab - population growth

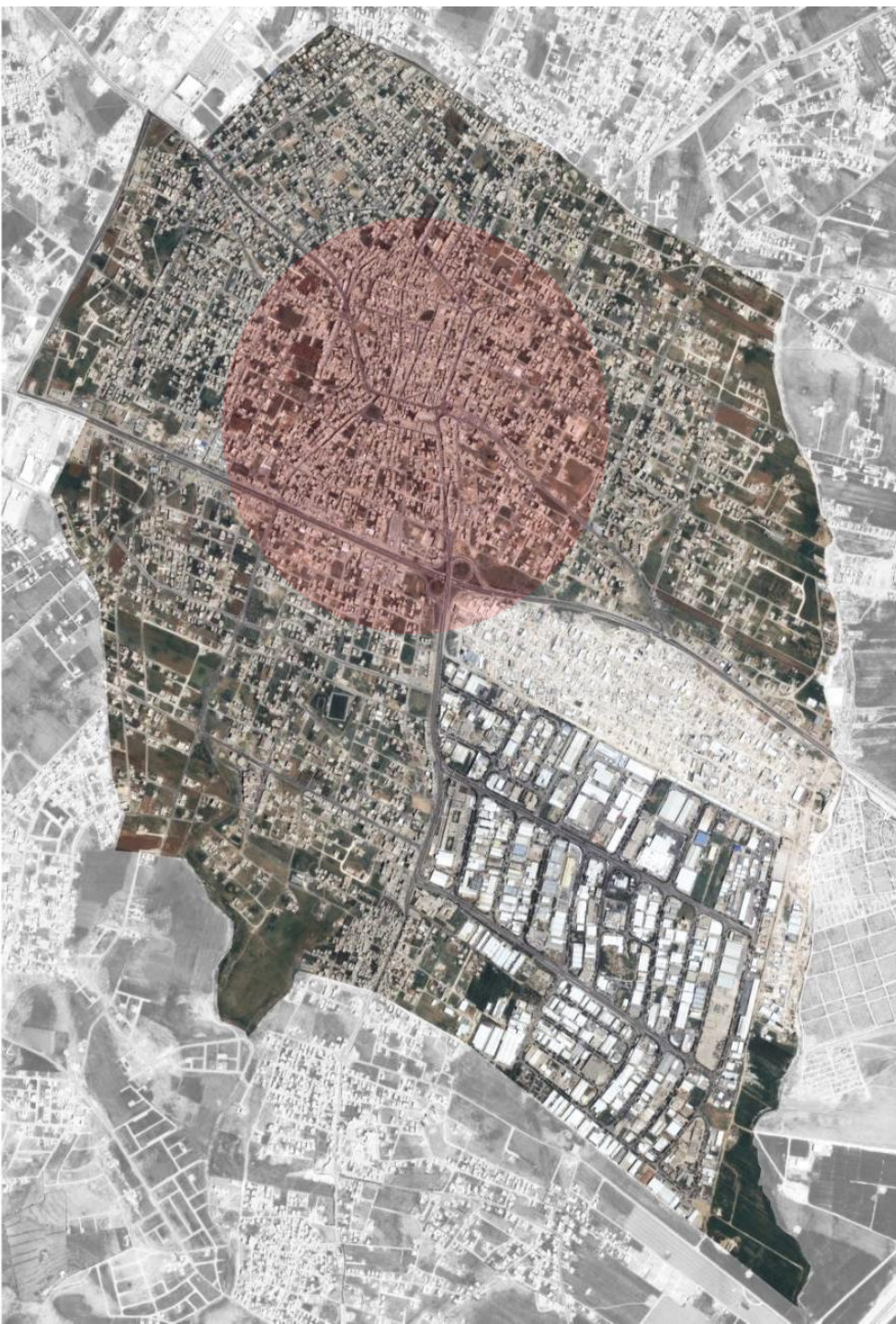
- Sahab 1978



- Sahab 2004







- Sahab 2016

# Sahab - overview

- ▶ The oldest and largest commercial center located in east Amman area 16km from Amman center
- ▶ Gained its status as separate municipality from Amman in 1962
- ▶ Serves as a market place for several villages in east Amman area



# Sahab - economic significance

- ▶ Core industrial area of greater Amman, housing two major industrial estates and numerous private industrial and commercial establishments
- ▶ Major supporting urban center in close proximity to existing and proposed Customs Clearance Centers
- ▶ Key location on the main transport routes to Iraq and Saudi Arabia

# Main Challenges

- Lack of urban environment fabric and infrastructure management, including roads, sidewalks, walkways, water supply, and sanitation
  - ✦ Crowded streets and insufficient public transportation system
  - ✦ Poor pedestrian connections to new bus station and station itself lacks shelter from rain and sun
  - ✦ No recreational areas, playgrounds, parks or open public spaces except the bus station
  - ✦ Pedestrian sidewalks vary in condition or do not exist

# Main Challenges

- ▶ Poor social and cultural image due to absence of social facilities, services and open space
- ▶ Environmental degradation and heavy pollution due to industrial activities
- ▶ Traffic congestion that slows down business development
- ▶ Challenges to social cohesion due to fast population growth, high crime rates and drug use



# Service-provision in Sahab

# Refugee influx challenges to services

- Refugee influx pressure on already struggling infrastructure and service-provision, including in **educational**, **health** and **environmental** sectors
- In Sahab refugees don't reside in camps but inside the community alongside Jordanian residents
- Most Sahab refugees lack official papers and work permits, but found employment due to Sahab's high economic activity and need for labor force in industrial city -> i.e. Sahab Municipality has silently supported their economic activity

# Health, Education and refugees

**-> Municipalities in Jordan are not directly responsible for providing education and health care services**

## BEFORE

- ▶ Sahab is served by only one health center and it used to be enough for its populations' needs
- ▶ Schools were operating in one shift

## AFTER

- ▶ Now the health center is overcrowded with long queues and lack of medicines
- ▶ Schools are currently operating in two shifts



# Education and refugees

**-> Municipalities in Jordan are not directly responsible for providing education services**

## BEFORE

- ▶ Schools was not directly responsible from Sahab Municipality

## AFTER

- Now Schools are currently operating by Sahab Municipality after the signature with the ministry of education last month.

# Waste management and refugees

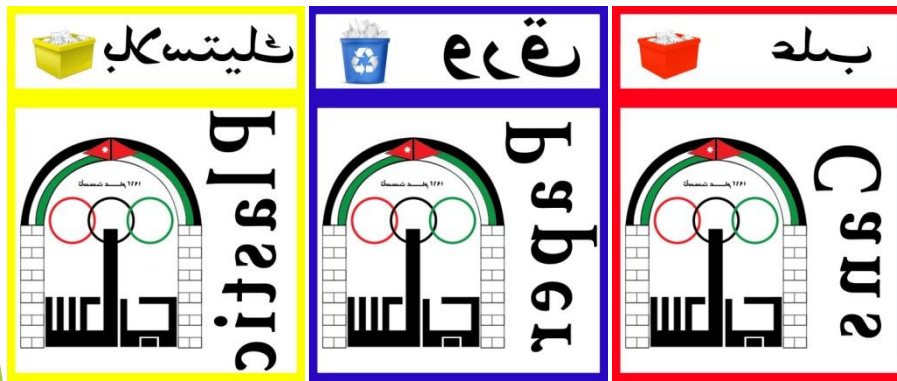
## BEFORE

- ▶ Car: 8 tons \* 3
- ▶ 4 tons \* 4
- ▶ 1 tons \* 2 tons
- ▶ Wheel Loader \*2
- ▶ Tipper 8 tons \*1

## AFTER

- ▶ 3 waste collection shifts per day:
  - ▶ shift A:6:00-14:30
  - ▶ shift B:14:30-22:30
  - ▶ shift C: 22:30-6:00
- ▶ Staff= 105
- ▶ **100 tons per day waste**
- ▶ 30 bags per day medical waste
- ▶ Nearest Garbage dump:  
Alshaa'er17 KM and Alghabawi  
55 KM

# Distribution of new containers to Sahab schools and public places





# 100,000 trees will be planted in Sahab

- 15000 trees already planted



# Sahab Now is member in the Covenant of Mayor

## ► Sustainable Energy Action Plan



← → ↻ mycovenant.eumayors.eu/seap-monitoring/index.php?page=my\_action\_plan&process=edit&item\_id=17979&active\_tab=submission ☆ S

My Covenant for Climate & Energy

Covenantofmayors.eu My Covenant

My Action Plan My Progress My Benchmarks My Energy Days My Support My Account

### My action plan

Introduction Overall Strategy Emission Inventory Action Plan Synthesis report Upload document Submission

**Submission status:**

- ✓ **Template** completed - 2017-01-20 (Last update: 2017-02-07)
- ✓ **Document** - 2017-02-03 (Date of formal approval: 2017-02-03)

**Preliminary online check:**

- ✓ **Preliminary check** performed - 2017-02-06

Repeat check and see checklist

**Submission:**

- ✓ **Successfully submitted** - 2017-02-03

Congratulations! Your SEAP and SEAP template have been successfully submitted. The Covenant team of the European Commission's Joint Research Centre will now proceed with the analysis of your data. Before the analysis starts, it will still be possible for you to correct mistakes or improve the data at any time by going back to the previous sections. During the analysis process, your SEAP template will be locked. After verification, you will receive a Feedback Report.



# Add grass for playgrounds of schools and rehabilitation of Sahab Hashemite Park











before

After























# Citizen participation and social accountability

- Sahab Municipality communicates directly with local population through:
  - ✦ Sahab Municipality Facebook account: بلدية سحاب  
<https://www.facebook.com/BaladiatSahab/?fref=ts>
  - ✦ Sahab Municipality website: [www.sahapjo.com](http://www.sahapjo.com)
  - ✦ Monthly meetings with women's sector and with youth sector approximately once a week
  - ✦ Quarterly citizen meetings at the Sahab hall accommodating around 250 people to discuss challenges and ongoing municipal projects and find out the community priorities

# The MENA Region Initiative as a Model of NEXUS Approach and Renewable Energy Technologies Project (MINARET)



# Thank You